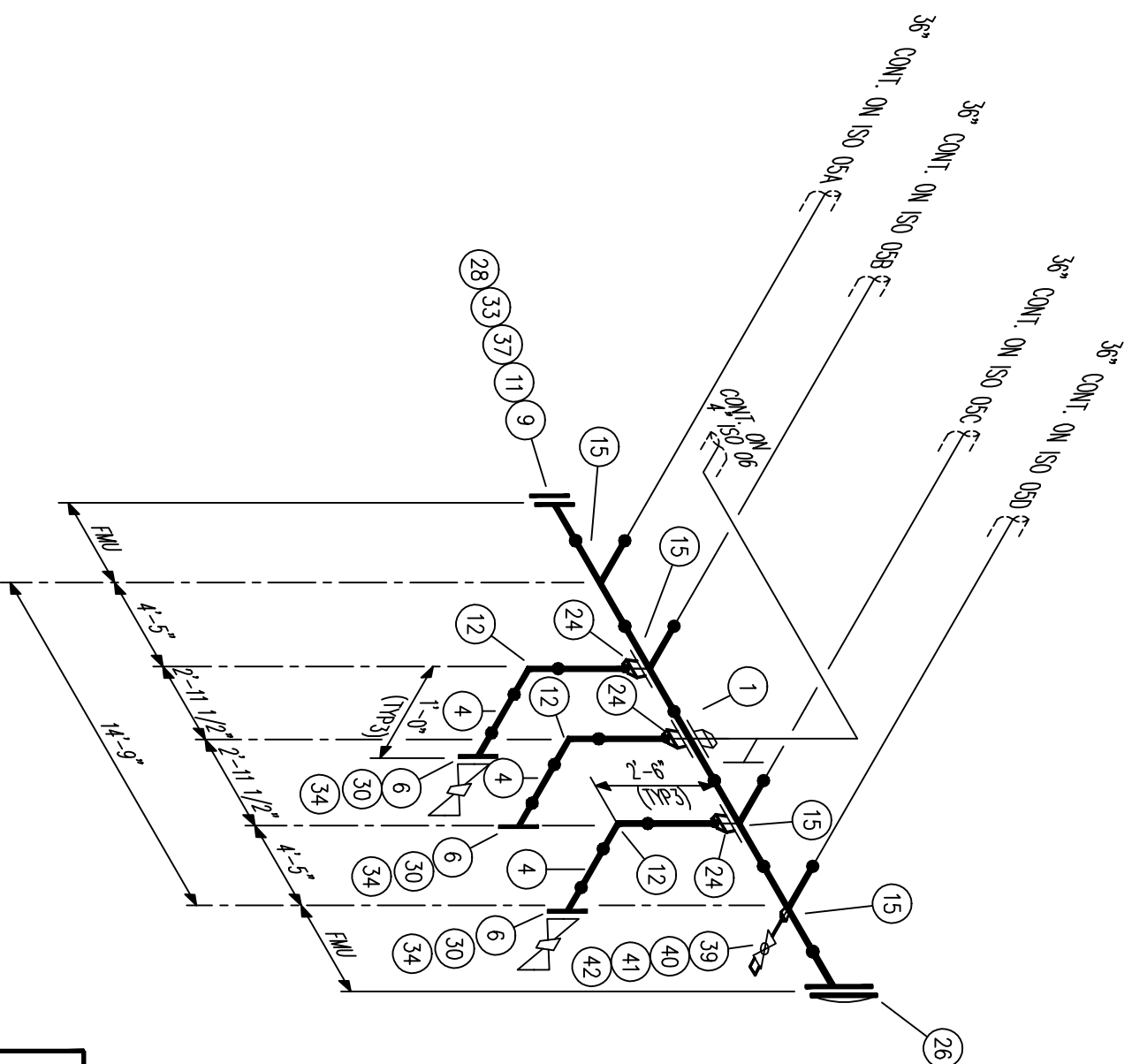


We offer fast and reliable in house Structural Steel and Piping drawings

CAD DRAWING. NO MANUAL CHANGES ALLOWED. DO NOT GUESS. IF IN DOUBT. ASK.



BILL OF MATERIAL

NO	QUAN	UNIT	S/F	DESCRIPTION
1	2'	LF	S	36"-PIPE 1.500" THK. GR. SL X-56 BE
4	7'	LF	S	2"-PIPE SCH 160 (.344" THK.) A106 Gr B BE
12	3	EA	S	2" 90D ELL LR BW, SCH 160 (.344" THK.) A106 Gr B BE
15	4	EA	S	36" TEE BW, 1.500" THK. GR. SL Y-56 BE
6	3	EA	S	2" -1500# WN.FLG. RTJ BY BE SCH 160 (.344") A106 GR-B
26	1	EA	S	36" -900# END CLOSURE 1.500" THK. SL X-56 BE
9	1	EA	S	36" -900# RTJ BY BE WN.FLG. 1.500" THK. SL X-56
11	1	EA	S	36" -900# RTJ BLIND.FLG. SL X-60
24	3	EA	S	2" on 36" WELDLET .SCH 160 (0.344") THK. A106 GR-B BE
39	1	EA	S	1"x 36" TREADOLET SCH. 160 A105
40	1	EA	S	1"x3" -LG. PIPE NIPPLE TBE .SCH. 160 C.S A106 GR. B
41	1	EA	S	1" 3000# BALL VALVE THRD 1"NPT.
42	1	EA	S	1" PLUG SCRD. HEX HEAD SL X-60
37	20	EA	S	B7 STUD W/2 NUTS EA. 3 1/2"x24 1/4" MOLY COAT
33	1	EA	S	900# RTJ RING GASKET 36"-R-105
28	1	EA	S	36" 900# DAVT. ASSY.
30	3	EA	S	1500# RTJ RING GASKET 2"-R-24
34	24	EA	S	B7 STUD W/2 NUTS EA. 7/8"x6" MOLY COAT

CITY OF HOUSTON FABRICATORS # 611		PRECISION WELDING + FABRICATION R ○		281-252-0151	
<p>THIS DRAWING AND THE INFORMATION HEREIN CONTAINED ARE THE PROPERTY OF PRECISION WELDING AND FABRICATION. IT IS TO BE USED ONLY FOR THE PROJECT AND SITE SPECIFICALLY IDENTIFIED HEREIN. NO REUSE, REPRODUCTION, OR DISSEMINATION OF THIS DRAWING OR INFORMATION HEREIN IS PERMITTED WITHOUT THE WRITTEN CONSENT OF PRECISION WELDING AND FABRICATION. ANY UNAUTHORIZED REUSE, REPRODUCTION, OR DISSEMINATION OF THIS DRAWING OR INFORMATION HEREIN SHALL BE THE ACT OF RECEIVING THEM BE DEEMED TO HAVE AGREED, TO MAKE NO COPY, REPRODUCTION, DISSEMINATION OR USE WHATSOEVER OF ALL OR ANY PART THEREOF EXCEPT AS EXPRESSLY AUTHORIZED IN WRITING BY PRECISION WELDING & FABRICATION. NOT TO ONE OR OTHERWISE DISPOSE OF THIS DRAWING AND TO RETURN THIS DRAWING PROMPTLY UPON REQUEST.</p>					
FOR PROJECT					
0	ISSUE FOR FABRICATION	6-08-04			
B	FOR APPROVAL	6-07-04			
A	FOR APPROVAL	5-27-04	DRV. SAH	CHK. DES	DATE 05-27-04
No.	REVISIONS	APP.	DATE	JDB No.	REV.
				A3102	0
				DWG. 03	